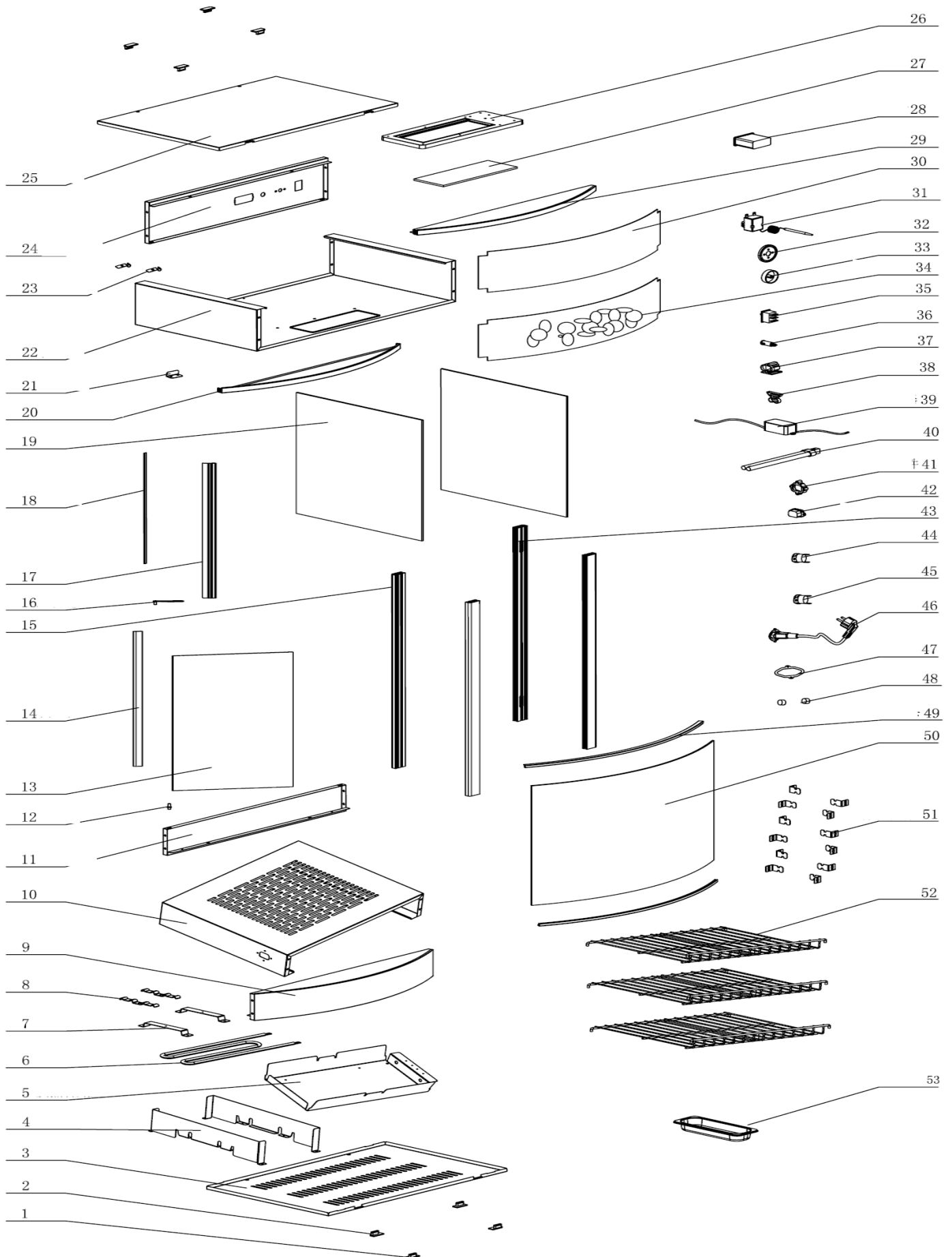


# CTH97

## Exploded parts diagram







Number	Description	Qty
1	Feet (Left)	2
2	Feet (Right)	2
3	Bottom Board	1
4	Bottom Frame	2
5	Heater Tray	1
6	Heating Element	2
7	Heater Bracket	1
8	Heater Clamp	1
9	Panel Fascia (Front)	1
10	Ventilated Cover	1
11	Back Panel	1
12	Door Pin	1
13	Door Glass	1
14	Door Frame	2
15	Front Pillar	2
16	Upper Gemel	1
17	Door Handle	1
18	Magnetic Strip	1
19	Side Glass	2
20	Fixing Plate (Bottom)	1
21	Door Stopper	1
22	Top Panel	1
23	Probe Clip	2
24	Control Panel	1
25	Top Cover	1
26	Transparent Lamp Cover	1
27	Fixing Plate for Lamp Cover	1
28	Thermometer	1
29	Fixing Plate (Top)	1
30	Transparent Plate	1
31	Thermostat Assy (Knob, fixed ring, thermostat)	1
32		
33		
34	Logo Plate	1
35	Switch	1
36	Indicator Light	1
37	Lamp Holder	1
38	Lamp Bracket	1
39	Electronic Ballast	1
40	Fluorescent Lamp	1
41	Socket Connector	1
42	Socket	1
43	Back Pillar	2
44	Thermostat	1

45	Thermostat	1
46	Power Cord	1
47	Plug Clamp	1
48	Magnet	1
49	Decorative Strip	1
50	Curved Glass	1
51	Shelf Clamp	12
52	Shelf	3
53	Water Tank	1

**\*\*\* Please contact Spares for assistance \*\*\***